



[Get Involved. Stay Informed. Get Connected.]

Voter's Guide
2010 ELECTION

Designed By:



Santa Rosa County Voting Facts

Supervisor of Elections: Mrs. Ann Bodenstein [983-1900]
 Hours: 8:00 a.m. to 4:30 p.m. M-F
 Web: www.santarosa.fl.gov/elections/index.html

Dates to remember:

Primary Early Voting	August 9-21, 2010 (8:30-4:30, Monday-Saturday)
Primary Election	August 24, 2010
General Early Voting	October 18-30, 2010 (8:30-4:30, Monday-Saturday)
General Election	November 2, 2010

Early voting will be held at the following locations:

Supervisor of Elections Office 6495 Caroline Street Milton, FL	South Service Center 5841 Gulf Breeze Parkway Gulf Breeze, FL
--	---

Santa Rosa County Voter Statistics as of June 25, 2010:

Total Registered Voters: 111,221

Democrats:	28,375	Republicans:	62,615
NPA:	16,461	Other:	3,770

What is a Universal Primary?

If all candidates for an office have the same party affiliation and the winner will have no opposition in the General Election, then all qualified voters, regardless of party affiliation, may vote in the Primary Elections for that office. These contests are called "Universal Primary Contests."

What County Commission and School Board race does my precinct vote for?

All of them! In Santa Rosa County, County Commissioners and School Board Members run countywide. And although the Commissioner and School Board Member who represents your district must live in your district, voters, regardless of their residential location, are allowed to vote in all County Commissioner and School Board races.

Candidates for Florida State Senate District 2

State Senate District 2 covers portions of Bay, Escambia, Okaloosa, Santa Rosa and all of Holmes and Washington counties. The District 2 seat is currently held by Durell Peaden, Jr. who has held the seat since 2000. Santa Rosa County Precincts 1, 2, 3, 4, 5, 6, 7, 8, 9, 11, 12, 13, 14, 15, 16, 17, 18, 19, 20, 21, 24, 27, 30, 31, 33 and 36 are eligible to vote in this race. The winner of the Republican primary will move to the General Election against the Tea Party and Write-In candidate.



Greg Evers, 55 Baker (Republican)

Occupation: Farmer & Small Businessman (Owner of Baker Farm Center, Akers of Strawberries & Greg Evers Farms)

Web: www.GregEvers.com

Email: greg@gregevers.com

I am a pro-life, conservative fifth generation Panhandle farmer and small businessman with a proven record of standing up against big government intruding into our lives. I am committed to preserving and protecting our Northwest Florida values and way of life from liberal attacks from Washington or Tallahassee.

Top Priorities:

1. Reducing Out of Control Government By Cutting Taxes & Regulations
2. Improving our Economy Through Individual & Small Business Tax Relief
3. Protecting & Preserving Our Northwest Florida Fundamental Freedoms & Values



Mike Hill, 52 Pensacola (Republican)

Occupation: State Farm Insurance Agent

Web: www.MikeHill4Senate.com

Email: MikeHill@MikeHill4Senate.com

Mike is a military veteran, and a graduate of the United States Air Force Academy. He has also been a successful small business owner celebrating 20 years of service with State Farm insurance. Mike is quickly becoming known as the "New Voice for Conservative Republicans in Northwest Florida."

Top Priorities:

1. Job creation - Form partnerships with high-tech businesses, education, and the military
2. Reduce government spending
3. Lower taxes - Repeal the 2.2B in new fees and assessments that was passed by the legislature last year

Christopher Crawford (Tea Party) No response.
Margaret Smith (Write-in) No response.

Candidates for Florida House

District 1

Florida House District 1 covers parts of Escambia, Okaloosa and Santa Rosa Counties. The District 1 Seat is currently held by Greg Evers who has held the seat since 2001. Santa Rosa County Precincts 1, 2, 3, 4, 5, 6, 7, 8, 9, 10 (only a portion of 10), 11, 12, 13, 14, 15, 16, 17, 18, 19, 20, 21, 24, 25, 27, 28, 30, 31, 32, 33, 36, 37 and 39 are eligible to vote in this race. The winner of the Republican primary will face the NPA candidate in the General Election.



Greg Brown, 28 Milton (Republican)

Occupation: Realtor
Web: www.VoteGregBrown.com
Email: Greg@VoteGregBrown.com

Greg Brown is a sixth generation Santa Rosian. He has a decade of proven legislative experience working for the U.S. Senate, U.S. Congress, and the Florida Senate. Brown serves on the local United Way Board, and is a member of SRYP and several local Chambers of Commerce.

Top Priorities:

1. Economic Recovery
2. Conservative Principles
3. Honesty & Trust in Government



Doug Broxson, 61 Gulf Breeze (Republican)

Occupation: Insurance and Real Estate
Web: www.dougbroxson2010.com
Email: doug@dougbroxson.com

Doug Broxson is a local businessman seeking the office for House Seat District One. Doug is a lifetime resident of Santa Rosa County. His family has served in elected positions since the 1850. "To be qualified to make laws you should know the experience of living under the law."

Top Priorities:

1. Guard and protect small business
2. Home Rule- Florida Constitutional right, must be protected
3. BP - keep pressure on.

Ricky Perritt (Republican) No response.



Ferd Salomon, 53 Pace (Republican)

Occupation: Commercial Real Estate Broker, NAI Halford
Web: www.FerdSalomon.com
Email: FerdSalomon@mchsi.com

Ferd Salomon is a retired naval officer and independent businessman. He has served on the Local Planning Board, is a board member of the Santa Rosa Chamber, WorkForce EscaRosa and is chairman of TEAM Santa Rosa. He is a graduate of Duke University and UWF. The Salomons live in Pace.

Top priorities:

1. Reduce tax burden for individuals and businesses
2. Reduce size and cost of government
3. Encourage job creation and economic growth through economic development enhancements.



Mathias Venditto, 30 Milton (NPA)

Occupation: Local Business Owner
Web: www.FloridaVotes2010.com

I am a Bible believing, God fearing, Jesus loving constitutional advocate. My Campaign is not accepting donations or endorsements and I am not affiliated with any political party. Florida needs political leaders who are prepared to stand up for the people and stop favoring special interest groups.

Top Priorities:

1. State Sovereignty: Best method of limiting an out of control government
2. Reinstate Open Carry: Best method of reducing crime & securing liberty
3. Silver-Based State Currency: Best method of restoring local economy

District 3

Florida House District 3 covers parts of Escambia County and one precinct in Santa Rosa County. The District 3 Seat is currently held by Clay Ford who has held the seat since 2007. Santa Rosa County Precinct 22, Gulf Breeze, is eligible to vote in this race. The Democrat and Republican Candidate will face each other in the General Election.



Clay Ford Gulf Breeze (Republican)

Occupation: Attorney
Web: www.clayford.us

Clay Ford has served in the Florida House since being elected in a special election in February of 2007. Prior to 2007 he served 16 years on the Gulf Breeze City Council. He is the Director of Northwest Florida Legal Services in Pensacola.

Top Priorities:

1. Create a climate for job growth.
2. Maintain funding for budget priorities without raising taxes.
3. Help area in recovery and compensation from Oil Spill.

Claudia Brown-Curry (Democrat) No response.

Candidates for County Commissioner District 2

The Board of County Commissioners serves as the legislative and policy setting body of Santa Rosa County as established under Section 125 of the Florida Statutes. As such, the Board enacts all legislation and authorizes programs and expenditures within the County.

Santa Rosa County Commission District 2 covers portions of Bagdad, East Milton, Garcon Point, Harold and Milton. The District 2 seat is currently held by Bob Cole who has held the seat since 2002. All precincts in Santa Rosa County are eligible to vote in this race. The winner of the Republican Primary will face the Christian Party Candidate in the General Election.



Prudence Caskey, 33 East Milton (Christian Party)

Occupations: Benefits Specialist at Sedlacek Insurance Service, Moderator at The American College Association, Executive at NAIFA-Pensacola
Web: www.prudencecaskey.com
Email: prudenceforcommission@gmail.com

Born in Tampa, Raised in Central Florida. Moved to Santa Rosa 11 years ago. Married for 13 years, Mother. Graduate of PJC and UWF. Licensed Insurance Agent for 10 years. Member, Asst. Treasurer and Children's Church Leader at East Side Baptist Church.

Top Priorities:

1. Transparency in Government!
2. Stop the spending!
3. Economic Development!



Robert "Bob" Cole, 58 Milton (Republican)

Occupation: Master Mechanic Owner of Bob Cole Automotive and Santa Rosa County Commissioner
Email: votebobcole@gmail.com

United States Navy honorable discharged 1974. A.S. degree Industrial Education, 35 year ASE Master Automotive Technician and Owner of Bob Cole Automotive for 25 years. Elected to Santa Rosa County Commission 2002 & 2006. Married to Sheila Cole 38 years, 4 children, 5 grandchildren. Board Chair, Chairman Bay Area Resource, Director Blackwater Housing.

Top Priorities:

1. Build jobs enabling citizens to and stay in our county.
2. Seek funding for new and better roads, Providing safer Transportation.
3. Lower the cost of government to keep our taxes low.



Claude Duvall, 64 Milton (Republican)

Occupation: Small Business Owner - ATM Company & Convenience Store
Web: www.claudeduvall2010.com

20+ year SRC resident. Married with two children and two grandchildren. Former Army cryptographer and board of directors member of 2 multi-million dollar corporations. Past president of East Milton Voluntary Fire Department, current Vice President East Milton Water Systems. Successful business owner for 16 years. Bachelors Degree, Personnel, UWF 1976.

Top Priorities:

1. Limited Government
2. Economic Growth
3. Better Jobs



Ron Scott Bagdad (Republican)

Occupation: Retired Risk Manager and Current Small Business Owner
Email: ronscott@bellsouth.net

USAF Veteran, Santa Rosa County Volunteer Firefighter of the Year, Florida Bar Judicial Grievance Committee with Meritorious Service, Criminal Justice Degree, Medical & Hazmat First Responder, NRA Patron member, NRA Legion of Honor, Pace Chamber, American Society Mechanical Engineers, American Society Civil Engineers. Married to my wonderful wife Liz.

Top Priorities:

1. Redirect County Resources to enhance private sector job creation.
2. Economic Stability through leadership and revising our economic development strategies.
3. Small Business Enhancements to help grow our small business community.



Clifton Wheeler, 39 Milton (Republican)

Occupation: Detention Deputy
Web: www.CliftonWheeler.com
Email: WheelerClifton@gmail.com

Native of Santa Rosa County and Milton High School alumni, class of 1989. Serving SRC with 11 years of Emergency Medical Services, 15 years as a volunteer firefighter and currently employed as Detention Deputy, for 4 years. Married 10 years with 3 sons (1 U.S. Army Ranger and 2 students).

Top Priorities:

1. Full Time Job - BOCC position requires and demands a full time person.
2. Consolidation - SRC needs consolidation to fertilize its grass roots for expansion.
3. Unnecessary Spending - Unnecessary spending creates unwelcomed job loss.

Candidates for County Commissioner District 4

The Board of County Commissioners serves as the legislative and policy setting body of Santa Rosa County as established under Section 125 of the Florida Statutes. As such, the Board enacts all legislation and authorizes programs and expenditures within the County.

Santa Rosa County Commission District 4 covers portions of East Milton, Midway, and all of Holley and Navarre. The District 4 seat is currently held by Gordon Goodin who has held the seat since 2002. All Precincts in Santa Rosa County are eligible to vote in this race. The winner of the Primary Election will be the next County Commissioner representing District 4. All registered voters are eligible to vote for this race in the Primary Election.



Ruth DuPont Esser, 48 Midway (Republican)

Occupation: Business owner (Avalon Landing RV Park), Laboratory Outreach Representative, Physicians Liaison for Baptist Hospital.
Web: www.RuthDupontEsser.com

Medical Laboratory Scientist degree and license holder. Owned and operated a construction company employing over 25 people. Bachelors degree in Industrial Psychology. I am greatly concerned about my community and offering all my skills to serve my county in hopes we can bring it safely into a better place.

Top Priorities:

1. Jobs
2. Budget
3. Lower taxes



Mark A. Goode, 41 Navarre (Republican)

Occupation: Retired Former Law Enforcement, Military, DOD Personal Security
Web: www.mgoodeforsrc2010.com
Email: mgoodeforsrc@gmail.com

After graduating Enka High School in 1986; I became active in military and local government service. With 25 plus combined years, I will draw from the wisdom that has been learned to lead Santa Rosa County to a more prosperous future.

Top Priorities:

1. Strive to restore the People's faith and trust in government
2. Responsible Economic Growth throughout Santa Rosa County
3. Strive for a more budgetary sound and cost effective government



Gordon Goodin, 54 Navarre (Republican)

Occupation: President and Owner of Holley Dirt Company, Inc.
Web: www.facebook.com/GordonGoodin2010
Email: gordongoodin2010@gmail.com

Less Government, Lower Taxes, More Personal Responsibility...it's more than just a slogan! An experienced Commissioner, with clear vision, proven leadership, and a long history of commitment to Santa Rosa County. In these trying and difficult times can we afford Commissioners who require "on the job training?" No false promises.

Top Priorities:

1. Oil Spill- Successful response and recovery from this life altering event.
2. Job creation- High paying and quality jobs for current and future generations.
3. Transportation- Continued leadership that improves safety, relieves congestion, and provides hurricane evacuation.



Jim Melvin, 65 Ward Basin Rd (Republican)

Occupation: Retired USAF Pilot, Retired Certified Public Accountant
Web: www.jimmelvin2010.com

Ronald Reagan conservative!! Retired Air Force pilot with 23 1/2 yrs. Built and managed multimillion dollar budgets. Second career as a Certified Public Accountant. I have a strong business background. Commissioners must cut taxes, cut spending. Please visit my website for more information.

Top Priorities:

1. Cut taxes
2. Stop wasteful spending
3. Ensure that common sense and integrity are at the heart of all commission decisions

*Don't
Forget...*

Dates to remember:

Primary Early Voting	August 9-21, 2010 (8:30-4:30, Monday-Saturday)
Primary Election	August 24, 2010
General Early Voting	October 18-30, 2010 (8:30-4:30, Monday-Saturday)
General Election	November 2, 2010

Candidates for Santa Rosa County School Board

Santa Rosa County School Board races are a county wide vote and open to all precincts. School board races are Non-Partisan so no party affiliations are listed. A candidate must receive 50% plus one vote in the Primary Election to be declared the winner. If no candidate receives 50% plus one vote, the two candidates with the highest number of votes will run against each other in the General Election.

District 1

The School Board District 1 seat is currently held by Diane Scott. The following schools are within this district: T.R. Jackson Pre-Kindergarten, Bagdad Elementary, East Milton Elementary, W.H. Rhodes Elementary, Hobbs Middle, M.L. King Middle and Milton High.



Dale Anderson, 57 Robinson Point Rd
Occupation: Professional Educator (teacher at Pace Middle and Avalon Middle)

As a natural born citizen of Santa Rosa County, I attended Harold and Gulf Breeze Elementary, Gulf Breeze Jr. High, Milton High School graduating in 1971, PJC at Milton Center, and UWF graduating in 1976. For 32 years I taught at Pace Middle and Avalon Middle.



Diane Scott, 50 Milton
Occupations: Santa Rosa County School Board, District 1 Representative and Vice Chairperson & University of West Florida, Associate Professor
Web: www.scottschoolboard.com
Email: scottschoolboard@gmail.com

I'm a mom. I'm an experienced educator, teaching 10 years at UWF. I'm an experienced administrator, serving our military families during two conflicts. Since 2006, I've served on our School Board. The decisions were tough. I do my homework, understand the issues, and vote with a focus on quality education.

Shepherd Iverson Bagdad (No Response)

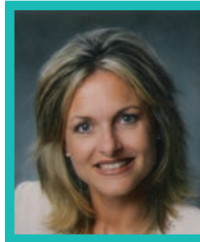
District 3

The School Board District 3 seat is currently held by Diane Coleman. The following schools are within this district: Holley-Navarre Primary, West Navarre Primary, Holley-Navarre Intermediate, West Navarre Intermediate, Holley-Navarre Middle and Navarre High.



Carol Boston, 45 Navarre
Occupation: Substitute Teacher
Email: bostonsrcsb@gmail.com

A seasoned sales and marketing professional, military spouse and mother of two, Carol Boston has nearly a decade of experience substitute teaching and serving on volunteer committees in the community and in the Santa Rosa School District. Carol is committed to developing and furthering programs and initiatives aimed at achieving excellence in education.



Diane Coleman, 43 Navarre
Occupation: School Board Member/ Businesswoman
Email: mdianecoleman@yahoo.com

Native of Santa Rosa County. I am passionate about children and their education. I am a proven leader who has been fiscally conservative and responsible in my decisions while providing a high quality education for our children. Married 26 years Rev. Greg Coleman. 3 daughters B.A. Elementary Education. Former Teacher. School Board Member 8yrs

District 5

The District 5 seat is currently held by Ed Gray, III. The following schools are within this district: Gulf Breeze Elementary, Oriole Beach Elementary, Gulf Breeze Middle, Woodlawn Beach Middle and Gulf Breeze High.



Scott Thomas Peden, 50 Gulf Breeze
Occupation: Regional Manager, Communications Unlimited Marketing, Inc.
Web: www.scottpeden.com
Email: scott@scottpeden.com

Married with three children. My wife, Renee Carr, has been teaching at Gulf Breeze Elementary School for 21 years. I have worked in the telecommunications industry for 27 years. The last twenty-two of those years have been spent creating, adjusting and executing multi-million budgets (capital and operating) and managing personnel.

Thomas Clinton Naile Gulf Breeze (No Response)

Candidates for Circuit Judge District 1, Group 3

The First Judicial Circuit covers all of Escambia, Okaloosa, Santa Rosa and Walton counties. All Santa Rosa County precincts are eligible to vote in this race. Judges are Non-Partisan so no party affiliations are listed. A candidate must receive 50% plus one vote in the Primary Election to be declared the winner. If no candidate receives 50% plus one vote, the two candidates with the highest number of votes in the primary will run against each other in the General Election.



Clint Davis, 35 Pace
Occupation: Attorney
Web: www.electclintdavis.com

I was born and raised in Santa Rosa County. I'm an honors graduate of the University of Florida College of Law. I have devoted my legal career to practicing as a trial lawyer. I am a husband and father of four who believes in conservative principles and traditional family values.



Alishia W. McDonald Pensacola
Occupation: Attorney at Law
Web: www.mcdonaldforjudge.info
Email: mcdonaldforjudge@gmail.com

Alishia W. McDonald is a dedicated Christian, wife, and mother. She is a former defender of the indigent, former Felony Circuit Prosecutor, and a current criminal and family law attorney. Alishia W. McDonald has proven that she has the integrity, experience, and common sense to make unwavering fair legal decisions.



Ken Brooks, 51 Milton
Occupation: Attorney
Web: www.kenbrooksforjudge.com
Email: ken@kenbrooksforjudge.com

Married 27 years to Cathy Choate Brooks. Father of 3 children. Practicing Attorney for over 20 years. General Practice; Trial practice in Federal and State Courts. Senior Partner/Owner of Brooks, Warrick & Associates. Former Decorated Florida Law Enforcement Officer. Conservative Values, Church Leader and Community Leader.



Michael Flowers Niceville
Occupation: Attorney
Web: www.flowersforjudge.com

Lifelong resident of Northwest Florida with 25 years of courtroom experience. He shares our community's traditional values; values that are learned through a hard day's work. Mike is committed to the Lord, his country, community, and family and is passionate about fairness and civility.

Mike Lawson No response.
Robert McGill No response.

2010 Amendments

- 1) Proposing the repeal of the provision in the State Constitution that requires public financing of campaigns of candidates for elective statewide office who agree to campaign spending limits.
- 2) Proposing an amendment to the State Constitution to require the Legislature to provide an additional homestead property tax exemption by law for members of the United States military or military reserves, the United States Coast Guard or its reserves, or the Florida National Guard who receive a homestead exemption and were deployed in the previous year on active duty outside the continental United States, Alaska, or Hawaii in support of military operations designated by the Legislature. The exempt amount will be based upon the number of days in the previous calendar year that the person was deployed on active duty outside the continental United States, Alaska, or Hawaii in support of military operations designated by the Legislature. The amendment is scheduled to take effect January 1, 2011.
- 3) The State Constitution generally limits the maximum annual increase in the assessed value of nonhomestead property to 10 percent annually. This proposed amendment reduces the maximum annual increase in the assessed values of those properties to 5 percent annually. This amendment also requires the Legislature to provide an additional homestead exemption for persons who have not owned a principal residence during the preceding 8 years. Under the exemption, 25 percent of the just value of a first-time homestead, up to \$100,000, will be exempt from property taxes. The amount of the additional exemption will decrease in each succeeding year for 5 years by the greater of 20 percent of the initial additional exemption or the difference between the just value and the assessed value of the property. The additional exemption will not be available in the 6th and subsequent years.
- 4) Establishes that before a local government may adopt a new comprehensive land use plan, or amend a comprehensive land use plan, the proposed plan or amendment shall be subject to vote of the electors of the local government by referendum, following preparation by the local planning agency, consideration by the governing body and notice. Provides definitions.
- 5) Legislative districts or districting plans may not be drawn to favor or disfavor an incumbent or political party. Districts shall not be drawn to deny racial or language minorities the equal opportunity to participate in the political process and elect representatives of their choice. Districts must be contiguous. Unless otherwise required, districts must be compact, as equal in population as feasible, and where feasible must make use of existing city, county and geographical boundaries.
- 6) Congressional districts or districting plans may not be drawn to favor or disfavor an incumbent or political party. Districts shall not be drawn to deny racial or language minorities the equal opportunity to participate in the political process and elect representatives of their choice. Districts must be contiguous. Unless otherwise required, districts must be compact, as equal in population as feasible, and where feasible must make use of existing city, county and geographical boundaries.
- 7) In establishing congressional and legislative district boundaries or plans, the state shall apply federal requirements and balance and implement the standards in the State Constitution. The state shall take into consideration the ability of racial and language minorities to participate in the political

2010 Amendments Continued...

process and elect candidates of their choice, and communities of common interest other than political parties may be respected and promoted, both without subordination to any other provision of Article III of the State Constitution. Districts and plans are valid if the balancing and implementation of standards is rationally related to the standards contained in the State Constitution and is consistent with federal law.

8) The Florida Constitution currently limits the maximum number of students assigned to each teacher in public school classrooms in the following grade groupings: for prekindergarten through grade 3, 18 students; for grades 4 through 8, 22 students; and for grades 9 through 12, 25 students. Under this amendment, the current limits on the maximum number of students assigned to each teacher in public school classrooms would become limits on the average number of students assigned per class to each teacher, by specified grade grouping, in each public school. This amendment also adopts new limits on the maximum number of students assigned to each teacher in an individual classroom as follows: for prekindergarten through grade 3, 21 students; for grades 4 through 8, 27 students; and for grades 9 through 12, 30 students. This amendment specifies that class size limits do not apply to virtual classes, requires the Legislature to provide sufficient funds to maintain the average number of students required by this amendment, and schedules these revisions to take effect upon approval by the electors of this state and to operate retroactively to the beginning of the 2010-2011 school year.

9) Proposing an amendment to the State Constitution to ensure access to health care services without waiting lists, protect the doctor-patient relationship, guard against mandates that don't work, prohibit laws or rules from compelling any person, employer, or health care provider to participate in any health care system; permit a person or an employer to purchase lawful health care services directly from a health care provider; permit a health care provider to accept direct payment from a person or an employer for lawful health care services; exempt persons, employers, and health care providers from penalties and fines for paying directly or accepting direct payment for lawful health care services; and permit the purchase or sale of health insurance in private health care systems. Specifies that the amendment does not affect which health care services a health care provider is required to perform or provide; affect which health care services are permitted by law; prohibit care provided pursuant to general law relating to workers' compensation; affect laws or rules in effect as of March 1, 2010; affect the terms or conditions of any health care system to the extent that those terms and conditions do not have the effect of punishing a person or an employer for paying directly for lawful health care services or a health care provider for accepting direct payment from a person or an employer for lawful health care services; or affect any general law passed by two-thirds vote of the membership of each house of the Legislature, passed after the effective date of the amendment, provided such law states with specificity the public necessity justifying the exceptions from the provisions of the amendment. The amendment expressly provides that it may not be construed to prohibit negotiated provisions in insurance contracts, network agreements, or other provider agreements contractually limiting copayments, coinsurance, deductibles, or other patient charges. Source: Amendment Summaries taken directly from the Division of Election's, Florida Department of State web site. <http://election.dos.state.fl.us>

* Please note, this Voter's Guide was printed before the deadline for adding amendments to the 2010 ballot. Check the web site above for the latest information regarding 2010 Amendments.



Santa Rosa Young Professionals was initiated in January 2009 as a group designed to engage up and coming leaders in the area by providing them opportunities for professional development, service to the community and social networking activities. Membership is open to any young professional 21 years of age and older who works, lives or does business in Santa Rosa County.

We would like to thank our Community Affairs Committee for their work during the 2010 election season.

Community Affairs Committee Chairs: Wes Meiss & Marianne Back
Committee Members: Susanna Doyle, Angela Hahn, Sheila Harris, Ildi Hosman, Stephen McKee, Angela Nolan, Leigh Anne Weekly, Jayer Williamson and Linsey Williamson

Special thanks to Santa Rosa Medical Center and Insight Marketing.



2010 Santa Rosa Young Professionals Board Members:

President - Jayer Williamson, Williamson Electrical Co., Inc
President-elect - Drew Hardgrave, Fisher-Brown Insurance
Vice President - Daniel P. Saba, Locklin, Jones & Saba, PA.
Treasurer - Cinnamon Holderman, Abaca Mortgage, Inc.
Secretary - Kendra Parson, United Way of Santa Rosa
Civic Chair - Betsy Soles, Navarre Beach Area Chamber of Commerce
Community Affairs Chairs - Wes Meiss, SRC Schools/SR Historical Society
Marianne Back, United Way of Santa Rosa
Marketing Chair - Sabrina McLaughlin, APR, Insight Marketing Communications, Inc.
Membership Chair - Susanna Doyle, Insight Marketing Communications, Inc.
Social/Networking Chair - Linsey Williamson, City of Milton
At-Large - Regina McKinley, Ashley Anderson, Buffalo Rock;
Jeff McGaughey, Sherwood Group; Trent Mathews, Sweet Season Farms LLC

Get Involved
Stay Informed
Get Connected

Mission: "To promote professional development through networking and social interaction among young professionals, while emphasizing community involvement to make a positive impact on Santa Rosa County."

Mission

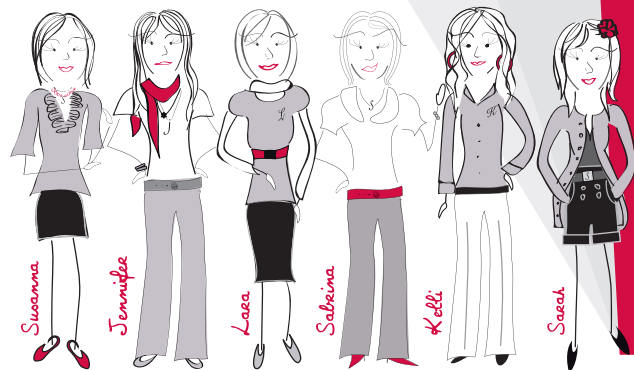
Santa Rosa Young Professionals
Phone: 850-418-3376
Email: info@sryp.org
Web: www.SRYP.org

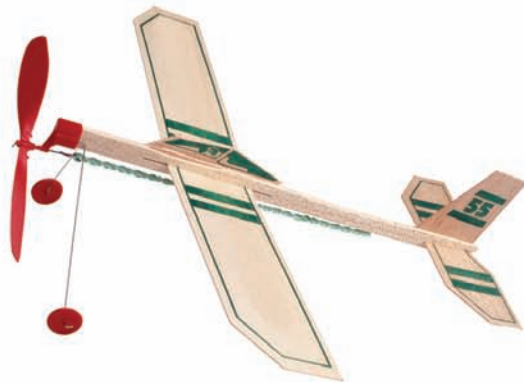
Become our fan on Facebook!

We were *[drawn together]* to build a new kind of agency...

We believe that the way we work gives our clients the best of both worlds - *creativity* and *results*. As a virtual agency we travel to you and work to be an active part of your business. Our award winning graphic design, research, marketing plan development and e-mail/social media campaigns have changed the way our clients do business and we are extremely proud to be a part of that!

So, give us a call and see what "different" can mean for you! For more information on all of the marketing services we provide, our people or what we have been up to lately check out insightfulconcepts.com.





ER Ordinary



ER **Extra**ordinary

ER Extra is our powerfully efficient way of providing smart, rapid and remarkable care to our emergency room patients. At Santa Rosa Medical Center, we know what it takes to deliver **the highest quality with barrier-shattering speed** and amazing precision.



Santa Rosa
● ● ● MEDICAL CENTER